



KODS SAFE

TEAM 3



WHAT IS THE REAL
PROBLEM?

When a child attends to a mass event or an
unsupervised playground, this child may be lost.

THE SOLUTION:

KIDS SAFE



“

The idea is to create a
wearable in wich a base
coordinate is marked.

”

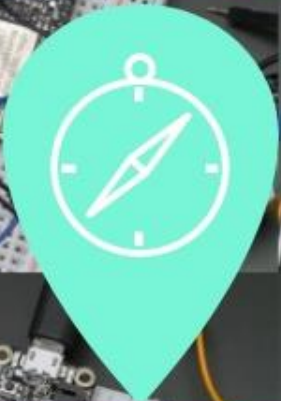


PROTOTYPE

The issue addressed is that lost children need to be able to give progressive autonomy without running the risk of losing him/her.



BATTERY



**GPS MODULE -
Ublox NEO6M**



**GSM MODULE
- SIM800L**



MOBILE PHONE



DEVICES OF "KIDS SAFE"



GSM GPRS ARDUINO SHIELD (29€)



ARDUINO UNO REV 3 (8€)



ARDUINO'S CHARGER (4'80€)

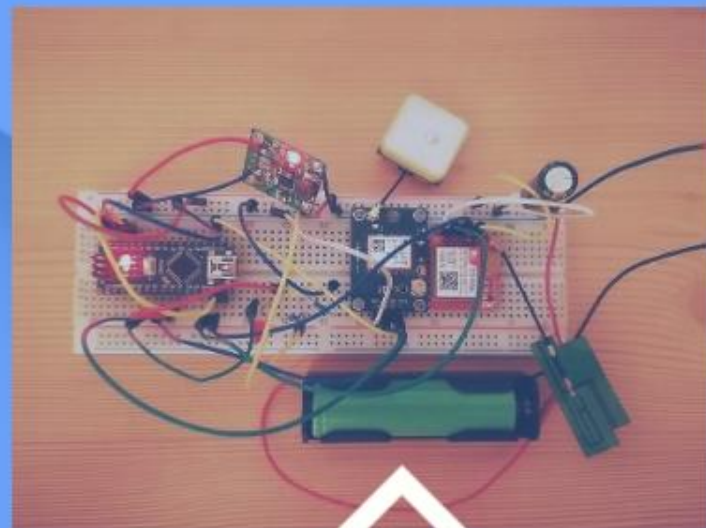


DUPONT MACHO-MACHO (2€)





DEVICES OF "KIDS SAFE"



GSM GPRS ARDUINO SHIELD (29€)



ARDUINO UNO REV 3 (8€)



ARDUINO'S CHARGER (4'80€)

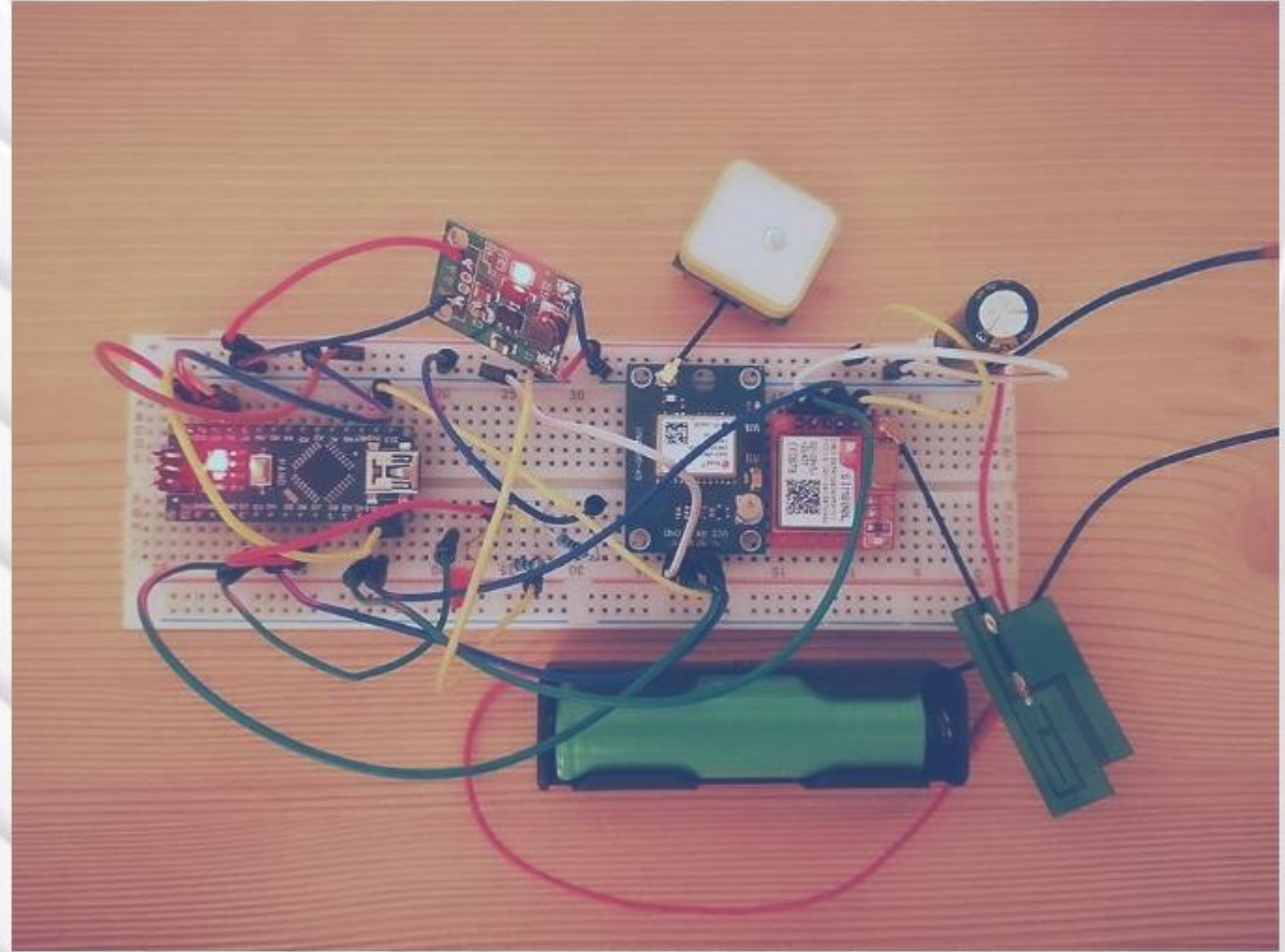


DUPONT MACHO-MACHO (2€)

THE MIX

OF ALL THE DEVICES

IS SOMETHING LIKE THIS



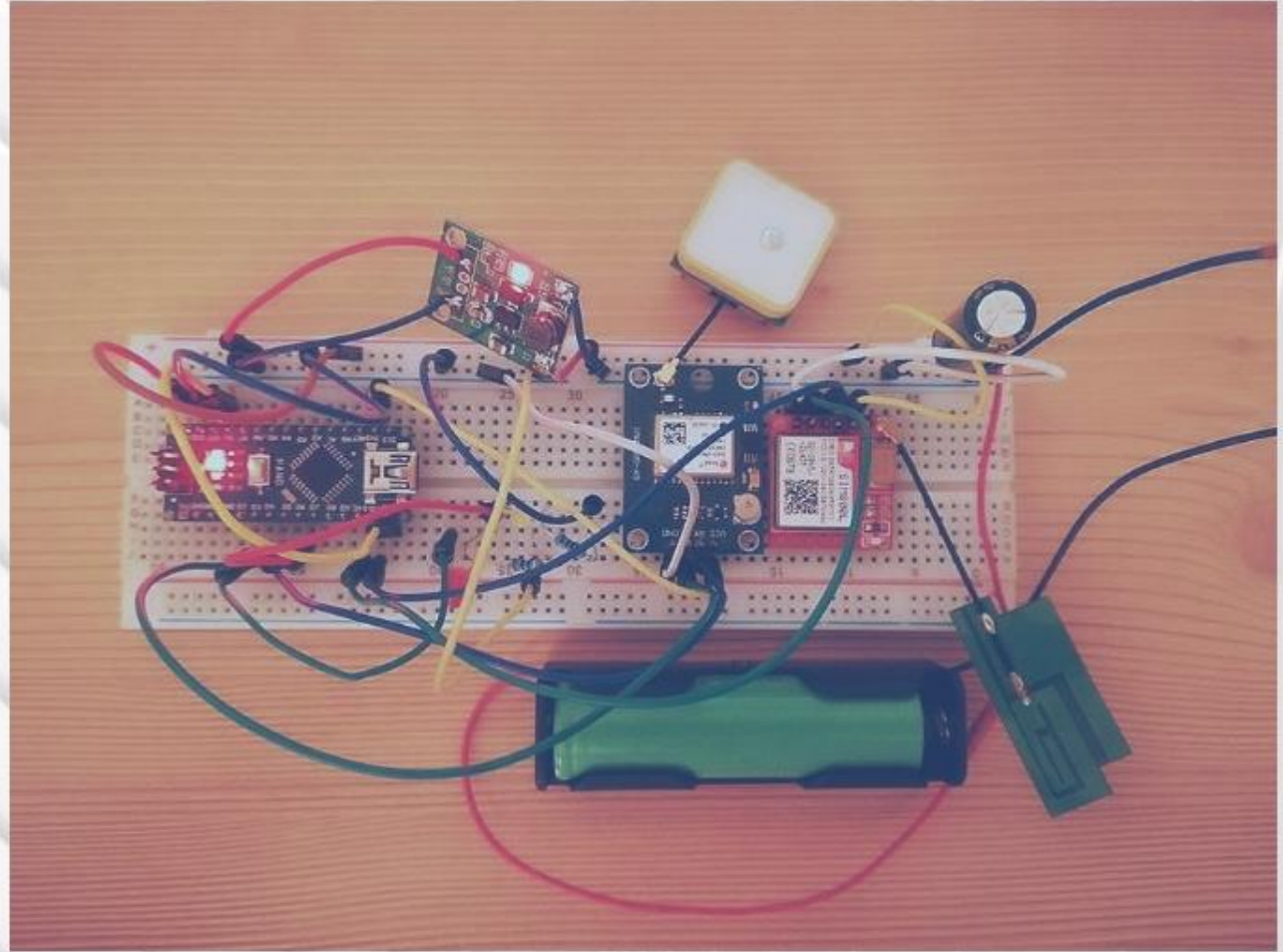
THE MIX

OF ALL THE DEVICES

IS SOMETHING LIKE THIS

BUT...

in a tiny way



CONCEPT
CONCEPT
CONCEPT
CONCEPT



To sign up
Download 365GPS

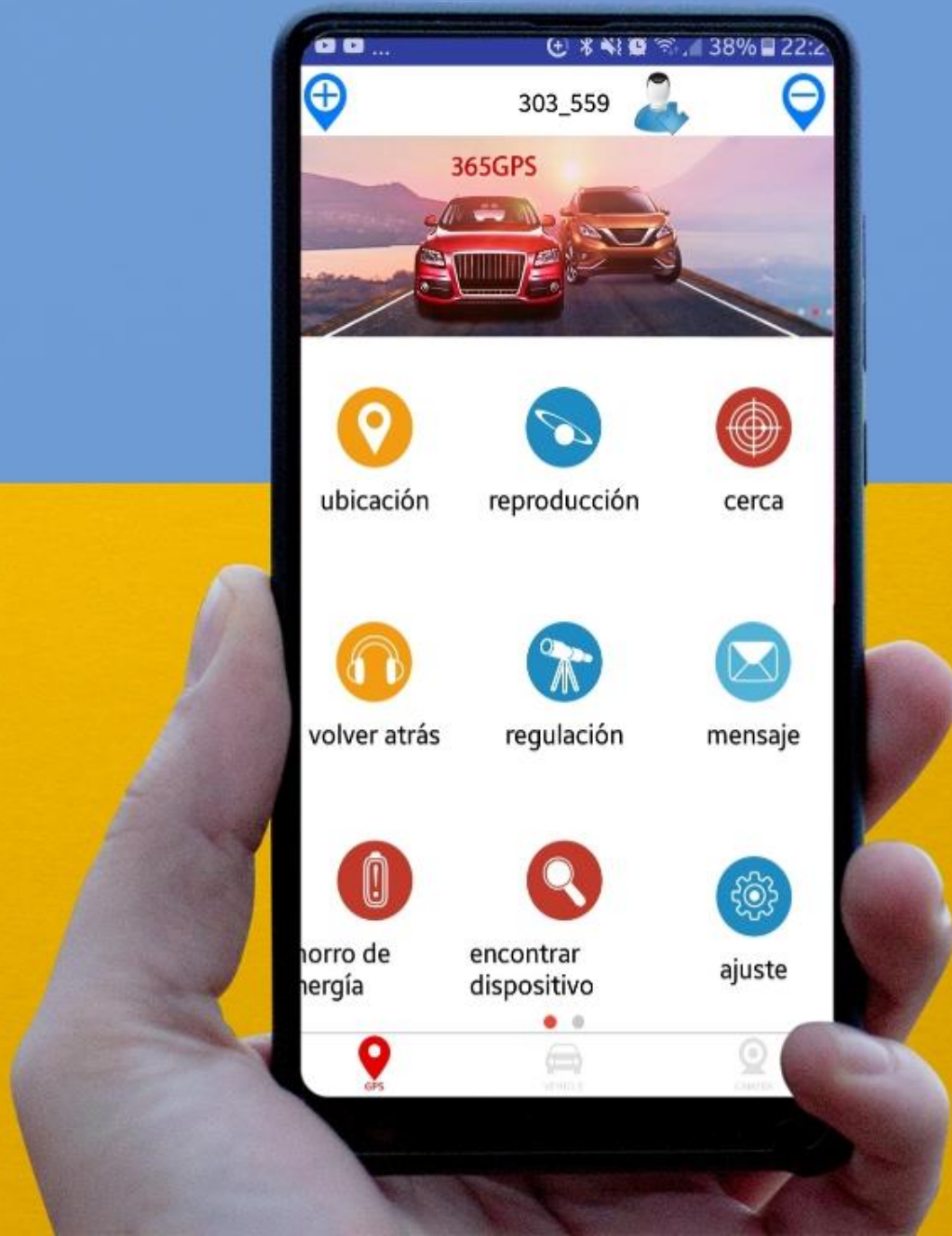


HOW IT WORKS

01

APP

Download the app, 365GPS and insert the code in the symbol with a plus in the left corner of the phone to introduce a new device.



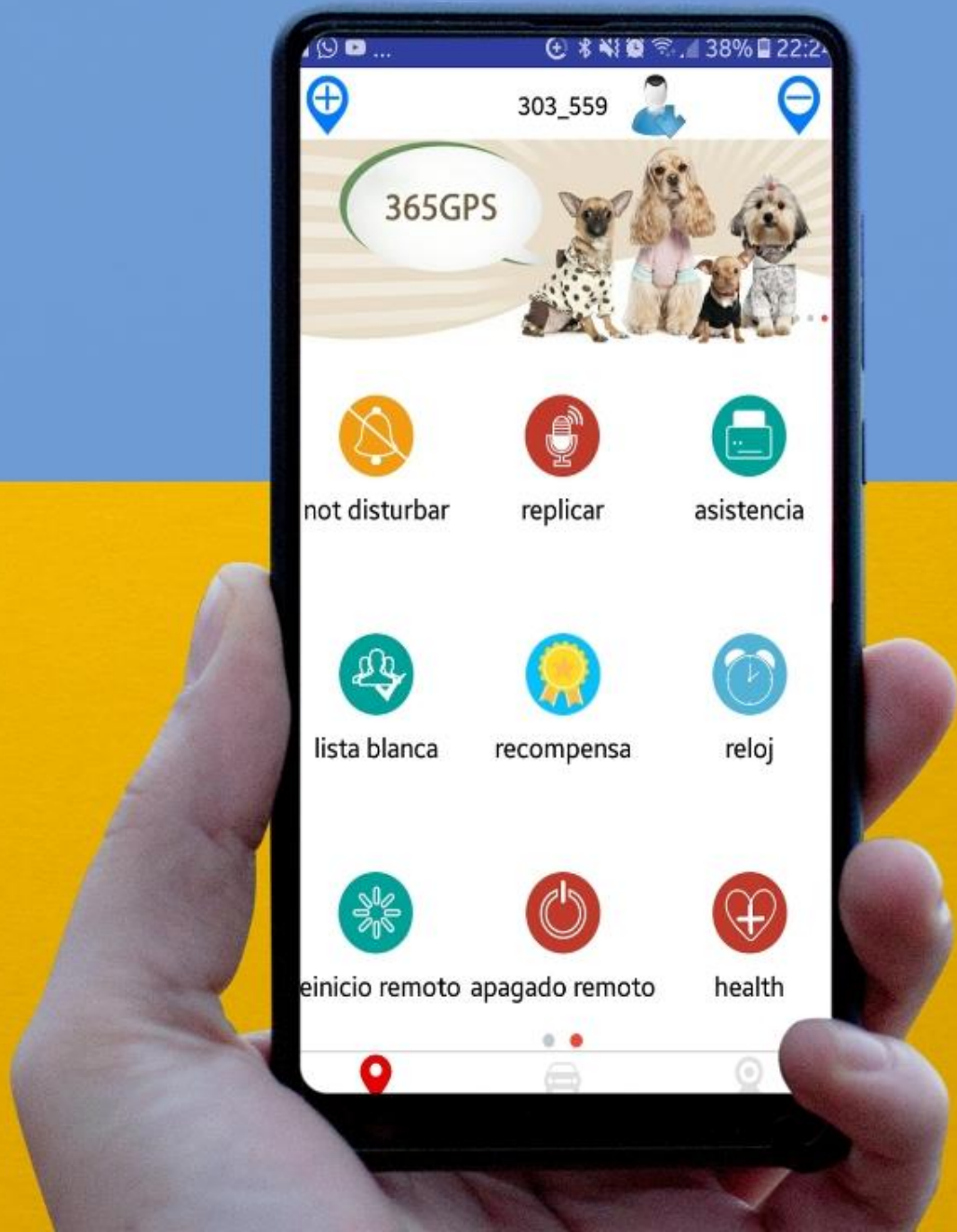


HOW IT WORKS

01

APP

Download the app, 365GPS and insert the code in the symbol with a plus in the left corner of the phone to introduce a new device.



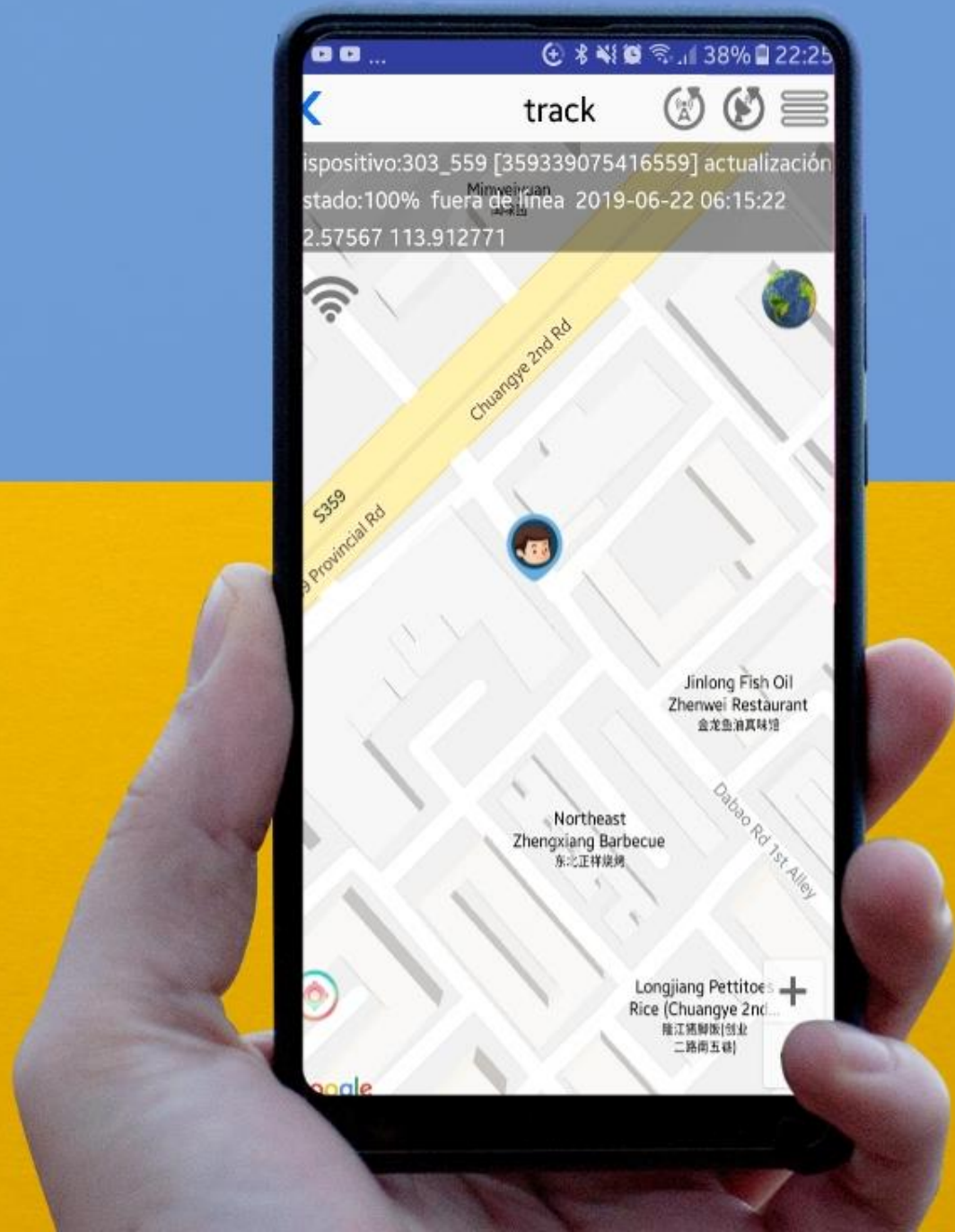


HOW IT WORKS

02

MAP

If everything is okay, the app will open a map in where you are going to see where the GPS is exactly



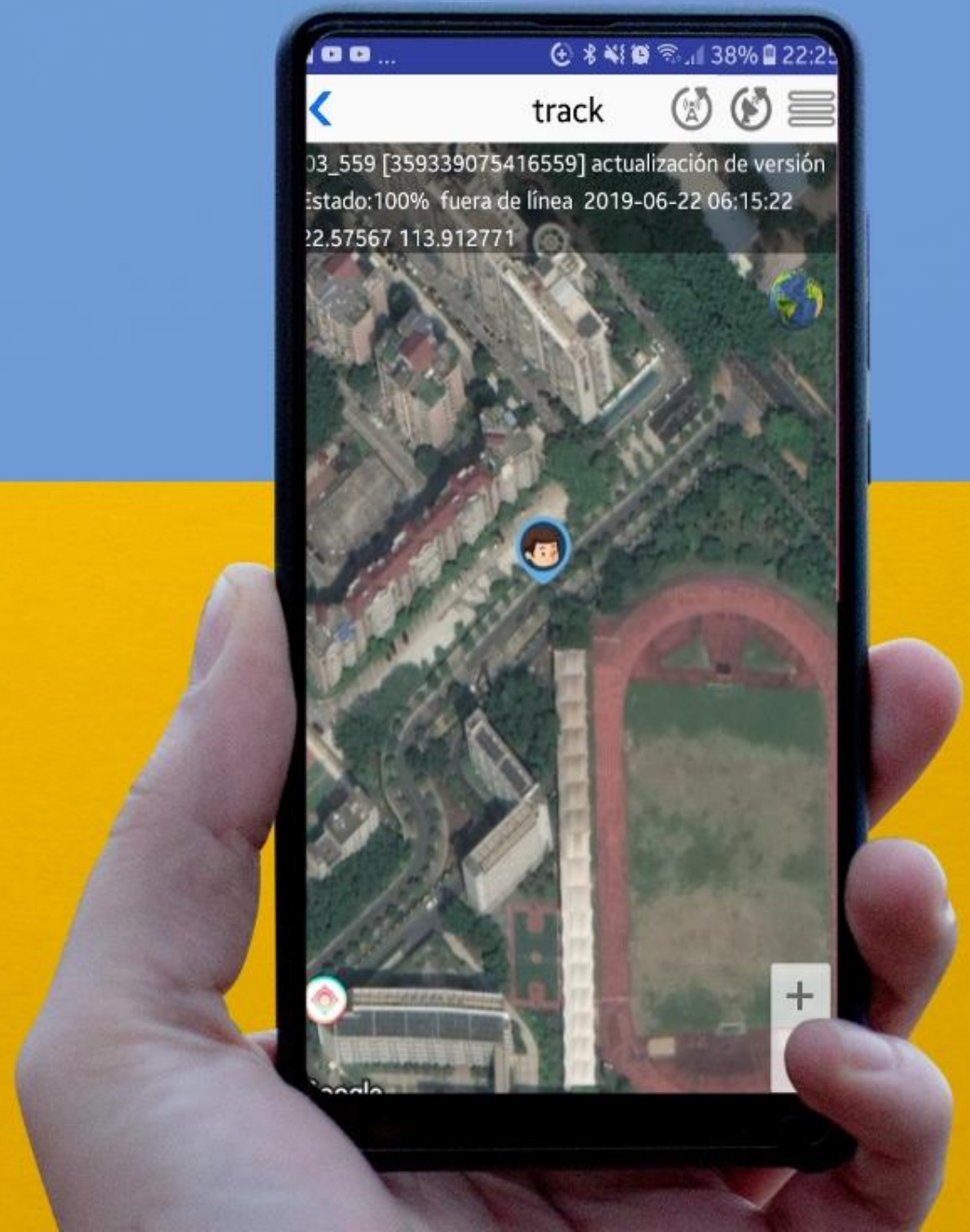


HOW IT WORKS

02

MAP

If everything is okay, the app will open a map in were you are going to see were the GPS is exactly



FREQUENT QUESTIONS

- GPS' battery life
- Where can we hide it?

FREQUENT QUESTIONS

- GPS' battery life
- Where can we hide it?

ANY QUESTION?



KODS
SAFE